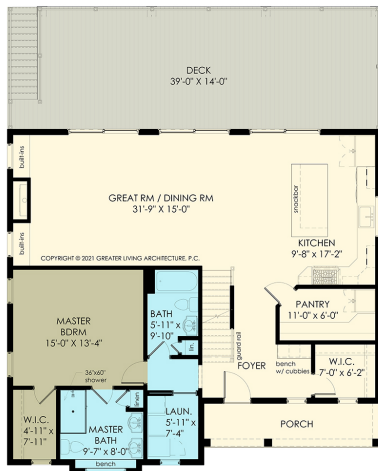


# THE WILLOW COTTAGE HOUSE PLAN 2363M



## HOUSE PLAN DRAWINGS

### Floor Plan



FIRST FLOOR PLAN  
Living Area = 1467 Sq. Ft.  
9'-0" Ceiling Height



SECOND FLOOR PLAN  
Living Area = 896 Sq. Ft.  
8'-0" Ceiling Height

## HOUSE PLAN DETAILS

### Square Footage

First Floor:	1467
Second Floor	896
<b>Total:</b>	<b>2363</b>

### Plan Specs

Width:	42' 4"
Depth:	52' 0"
First Floor Ceiling Height:	9'
Bedrooms:	4
Bathrooms:	3
Project Number:	15441

[greaterliving.com](http://greaterliving.com)

3033 BRIGHTON HENRIETTA TOWN LINE ROAD  
ROCHESTER, NY 14623 • 585.272.9170

Renderings & images shown may differ from final construction documents.

© 2021 Greater Living Architecture, P.C. All rights reserved.

