

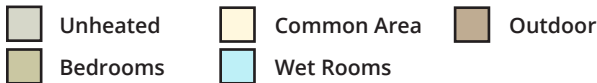
THE SEDGWICK

HOUSE PLAN 2339RM

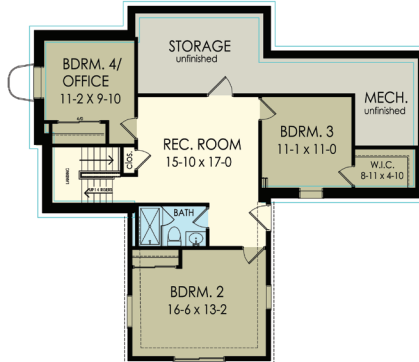


HOUSE PLAN DRAWINGS

Floor Plan



FIRST FLOOR PLAN
Scale: N.T.S.
Living Area = 1380 Sq. Ft.
9'-0" Ceiling Height



FINISHED BASEMENT
Scale: N.T.S.
Living Area = 959 Sq. Ft.

HOUSE PLAN DETAILS

Square Footage

First Floor:	1380
Lower Level:	959
Total:	2339

Plan Specs

Width:	48' 0"
Depth:	43' 6"
First Floor Ceiling Height:	9'
Bedrooms:	4
Bathrooms:	2.5
Project Number:	2680B

greaterliving.com

3033 BRIGHTON HENRIETTA TOWN LINE ROAD
ROCHESTER, NY 14623 • 585.272.9170

Renderings & images shown may differ from final construction documents.

© 2022 Greater Living Architecture, P.C. All rights reserved.

