

# THE BRISTOL

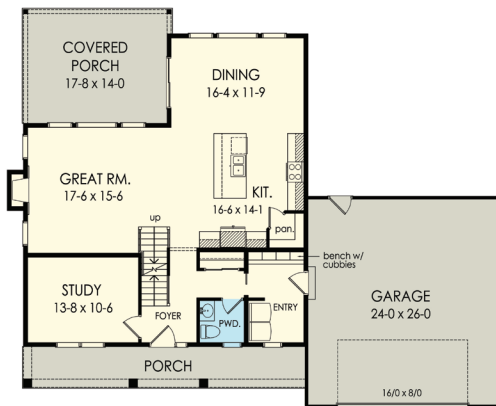
# HOUSE PLAN 2164



## HOUSE PLAN DRAWINGS

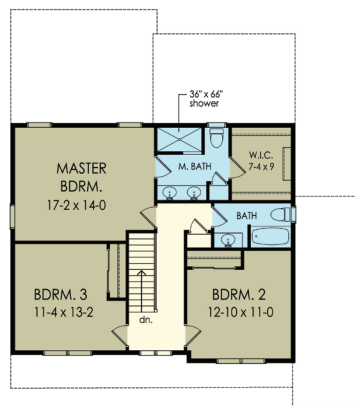
### Floor Plan

- Unheated
- Common Area
- Bedrooms
- Wet Rooms



**FIRST FLOOR PLAN**  
Living Area = 1155 Sq. Ft.  
9'-0" Ceiling Height

58'-8" Wide  
49'-0" Deep



**SECOND FLOOR PLAN**  
Living Area = 1011 Sq. Ft.

## HOUSE PLAN DETAILS

### Square Footage

First Floor:	1153
Second Floor:	1011
<b>Total:</b>	<b>2164</b>

### Plan Specs

Width:	58' 8"
Depth:	49' 0"
First Floor Ceiling Height:	9'
Bedrooms:	3
Bathrooms:	2.5
Garage Bays:	2
Project Number:	15334L

[greaterliving.com](http://greaterliving.com)

3033 BRIGHTON HENRIETTA TOWN LINE ROAD  
ROCHESTER, NY 14623 • 585.272.9170

Renderings & images shown may differ from final construction documents.

© 2021 Greater Living Architecture, P.C. All rights reserved.

