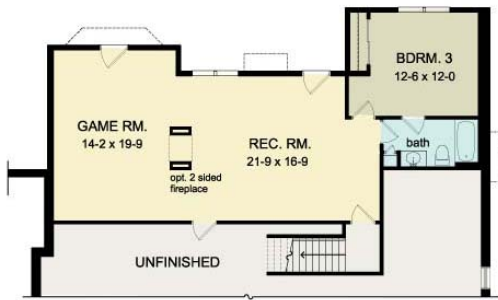


## THE WYNDHAM

www.greaterliving.com

© Copyright 2006



**BASEMENT PLAN**

Living Area = 1034 Sq. Ft.



\*\*\*\* Images shown may differ from final construction documents. \*\*\*\*

FIRST FLOOR	2156 sq.ft.	<b>9'-0" First Floor Ceiling Height</b>	WIDTH	<b>77' 10"</b>
LOWER LEVEL	1034 sq.ft.		DEPTH	<b>51' 0"</b>
TOTAL	3190 sq.ft.		PROJECT	<b>2356B</b>