

THE BRIDGETOWN

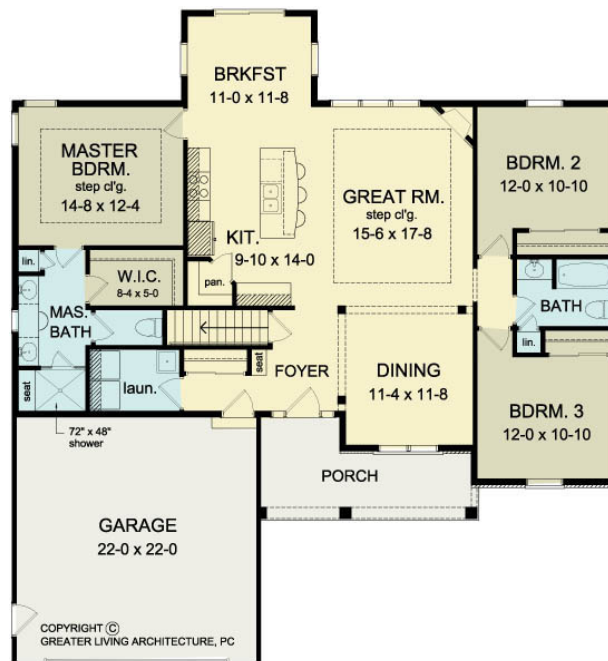
HOUSE PLAN 1712R



HOUSE PLAN DRAWINGS

Floor Plan

- Unheated
- Bedrooms
- Common Area
- Wet Rooms



HOUSE PLAN DETAILS

Square Footage

First Floor:	1712
Total:	1712

Plan Specs

Width:	53' 8"
Depth:	57' 10"
First Floor Ceiling Height:	9'
Bedrooms:	3
Bathrooms:	2
Garage Bays:	2
Project Number:	2468D

greaterliving.com

3033 BRIGHTON HENRIETTA TOWN LINE ROAD
ROCHESTER, NY 14623 • 585.272.9170

Renderings & images shown may differ from final construction documents.

© 2012 - 2020 Greater Living Architecture, P.C. All rights reserved.

